
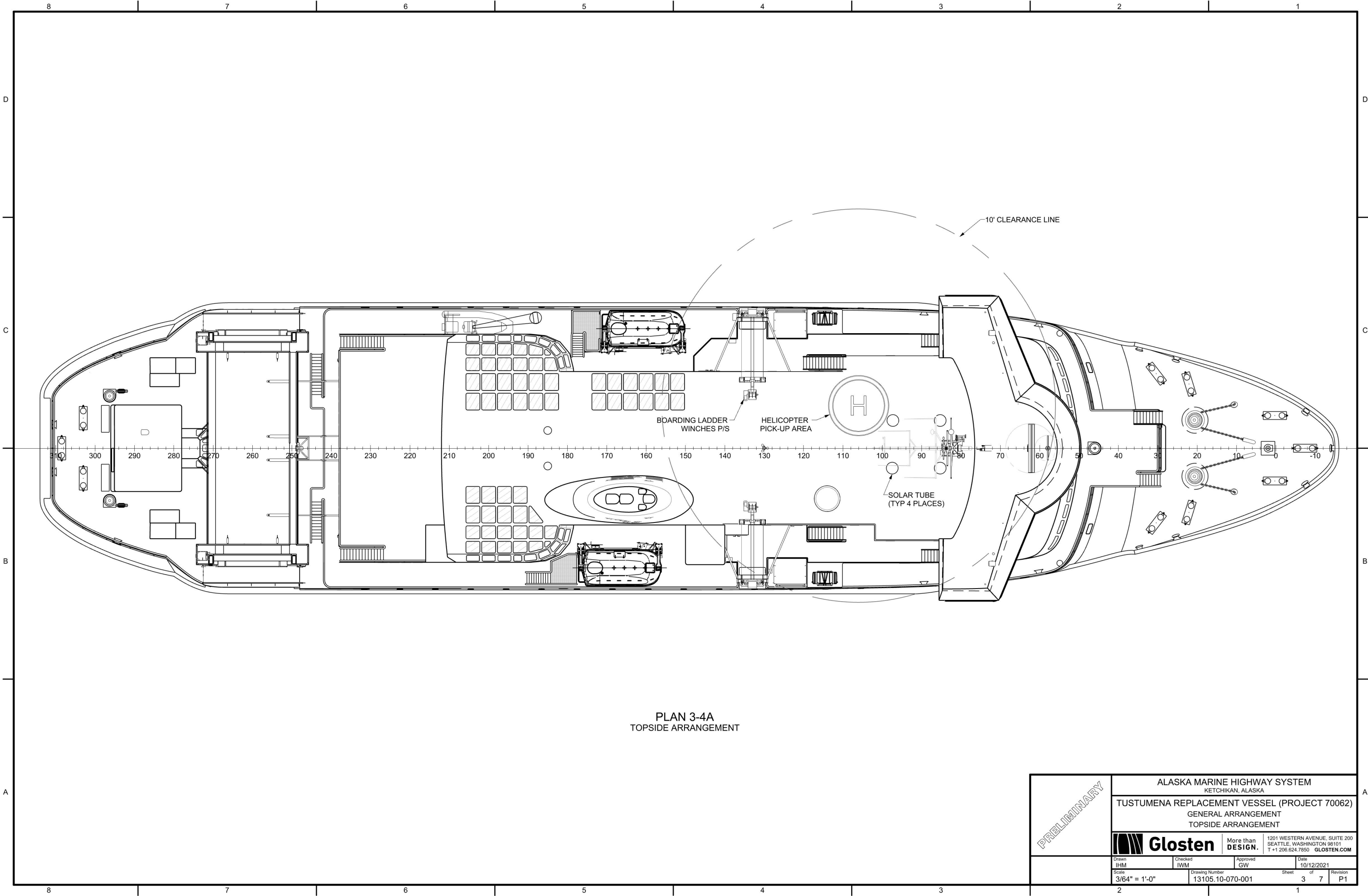

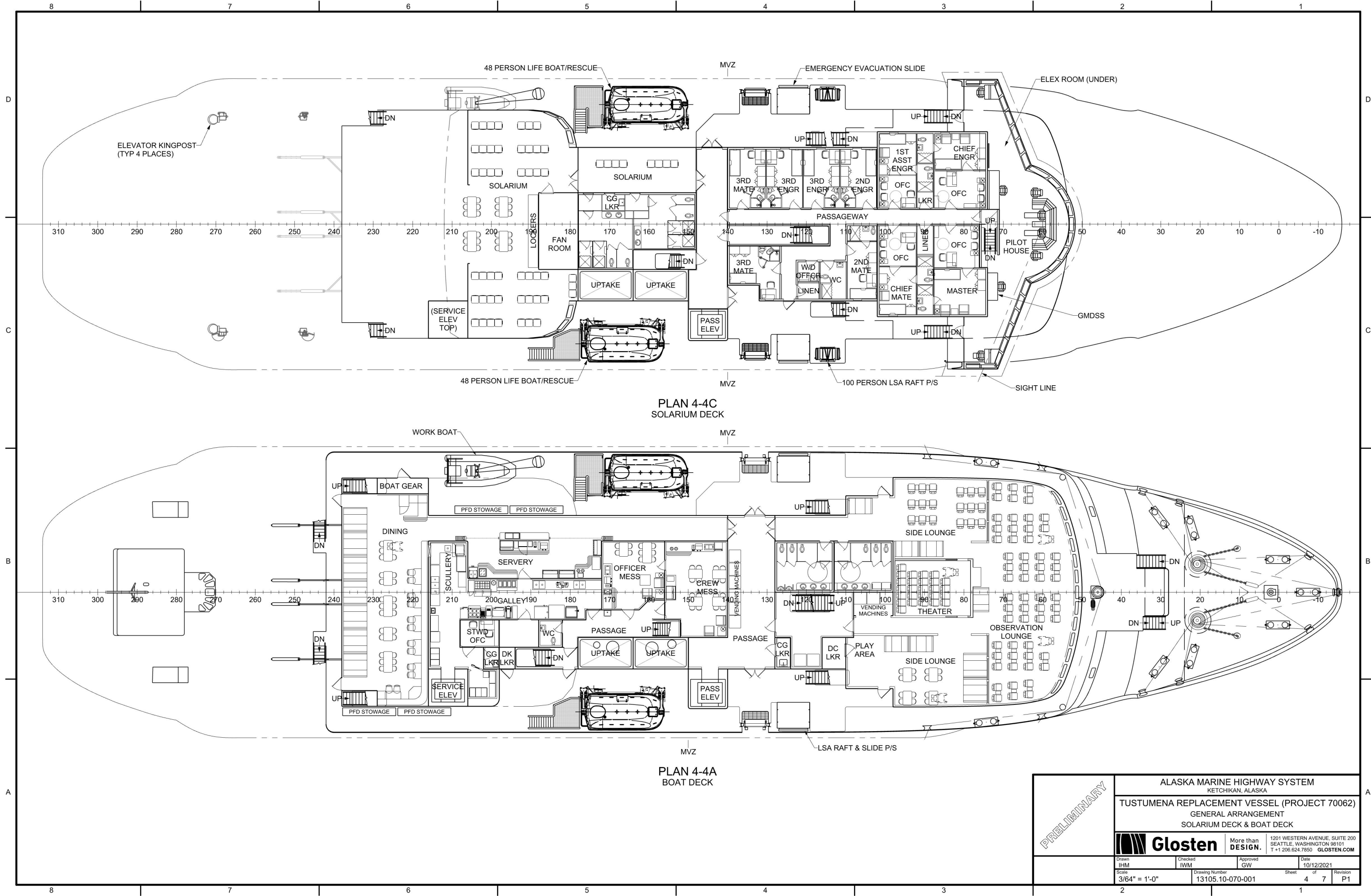


ELEVATION 2-4A
INBOARD PROFILE

<div style="writing-mode: vertical-rl; transform: rotate(180deg); font-weight: bold; font-size: 2em;">PRELIMINARY</div>	<div style="text-align: center;"> ALASKA MARINE HIGHWAY SYSTEM KETCHIKAN, ALASKA </div>				
	TUSTUMENA REPLACEMENT VESSEL (PROJECT 70062) GENERAL ARRANGEMENT INBOARD PROFILE				
	 Glostén		More than DESIGN.		1201 WESTERN AVENUE, SUITE 200 SEATTLE, WASHINGTON 98101 T +1 206.624.7850 GLOSTEN.COM
Drawn IHM		Checked IWM		Approved GW	Date 10/12/2021
Scale 3/64" = 1'-0"		Drawing Number 13105.10-070-001		Sheet 2 of 7	Revision P1




PRELIMINARY	ALASKA MARINE HIGHWAY SYSTEM KETCHIKAN, ALASKA				
	TUSTUMENA REPLACEMENT VESSEL (PROJECT 70062) GENERAL ARRANGEMENT TOPSIDE ARRANGEMENT				
	 Glostén		More than DESIGN.	1201 WESTERN AVENUE, SUITE 200 SEATTLE, WASHINGTON 98101 T +1 206.624.7850 GLOSTEN.COM	
Drawn IHM	Checked IWM	Approved GW	Date 10/12/2021		
Scale 3/64" = 1'-0"	Drawing Number 13105.10-070-001		Sheet 3	Revision P1	



PRELIMINARY

ALASKA MARINE HIGHWAY SYSTEM
KETCHIKAN, ALASKA

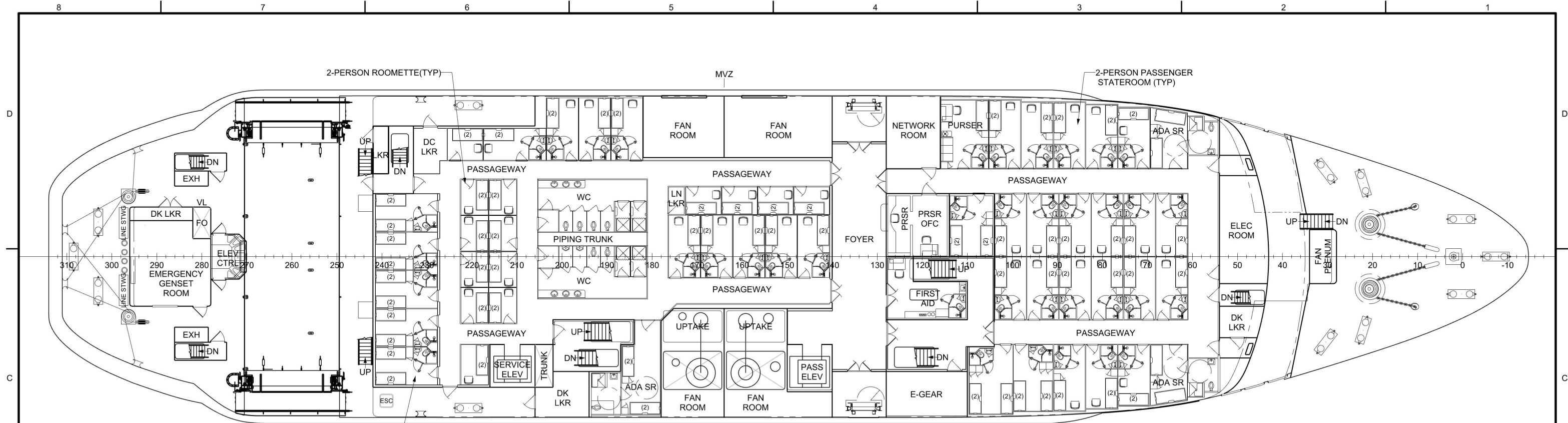
TUSTUMENA REPLACEMENT VESSEL (PROJECT 70062)
GENERAL ARRANGEMENT
SOLARIUM DECK & BOAT DECK

 **Glostén**

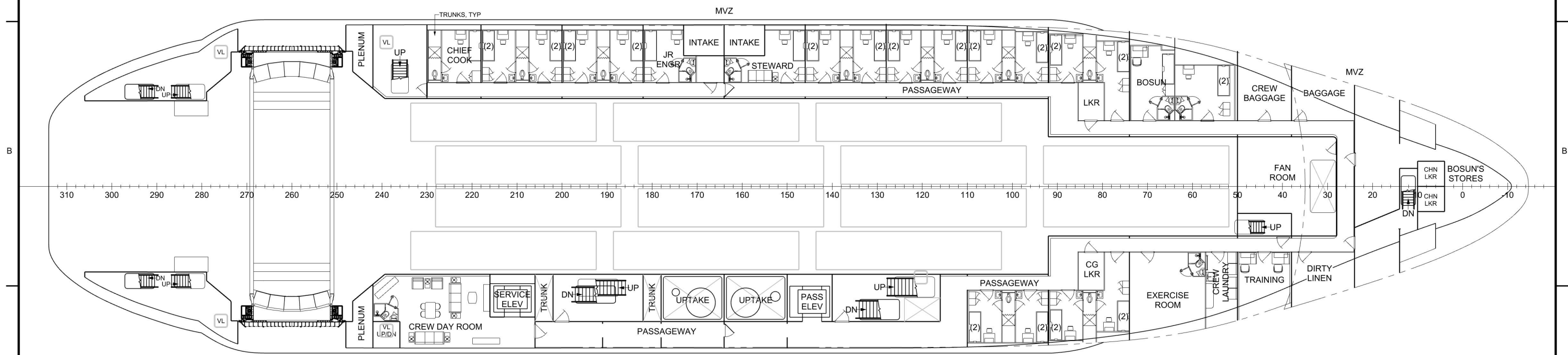
More than
DESIGN.

1201 WESTERN AVENUE, SUITE 200
SEATTLE, WASHINGTON 98101
T +1 206.624.7850 GLOSTEN.COM


Drawn IHM	Checked IWM	Approved GW	Date 10/12/2021
Scale 3/64" = 1'-0"	Drawing Number 13105.10-070-001	Sheet 4 of 7	Revision P1

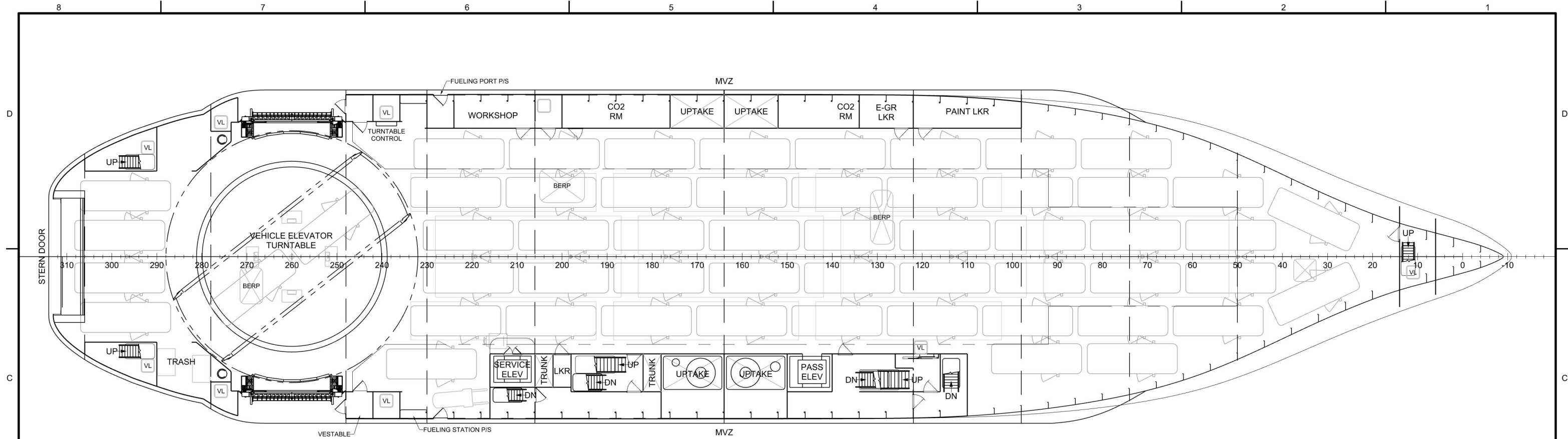


PLAN 5-4C
CABIN DECK

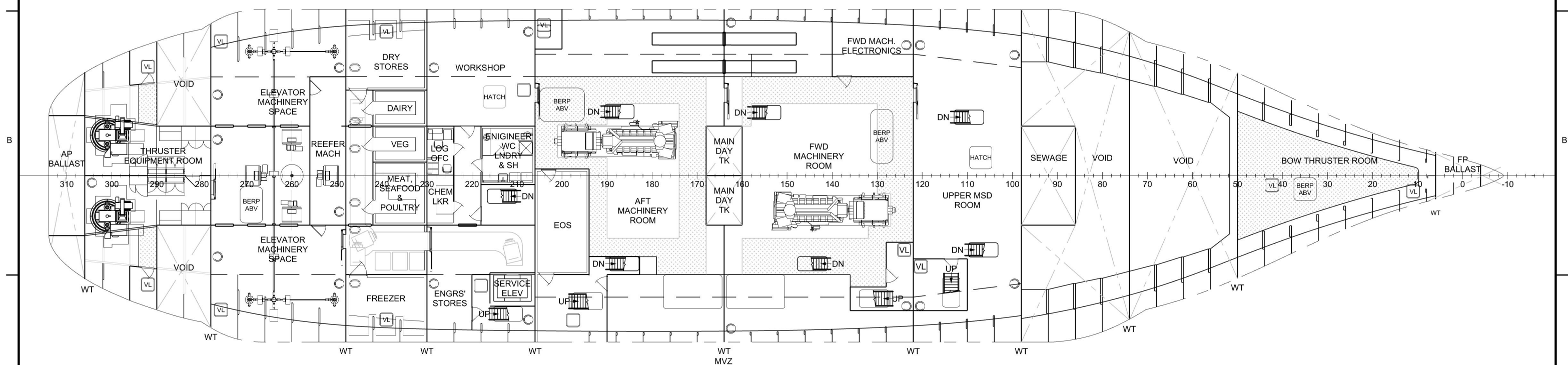


PLAN 5-4A
MEZZANINE DECK


PRELIMINARY	ALASKA MARINE HIGHWAY SYSTEM KETCHIKAN, ALASKA			
	TUSTUMENA REPLACEMENT VESSEL (PROJECT 70062) GENERAL ARRANGEMENT CABIN DECK & MEZZANINE DECK			
	 Glostén		More than DESIGN.	
	1201 WESTERN AVENUE, SUITE 200 SEATTLE, WASHINGTON 98101 T +1 206.624.7850 GLOSTEN.COM			
Drawn IHM	Checked IWM	Approved GW	Date 10/12/2021	
Scale 3/64" = 1'-0"		Drawing Number 13105.10-070-001		Sheet 5 of 7
				Revision P1

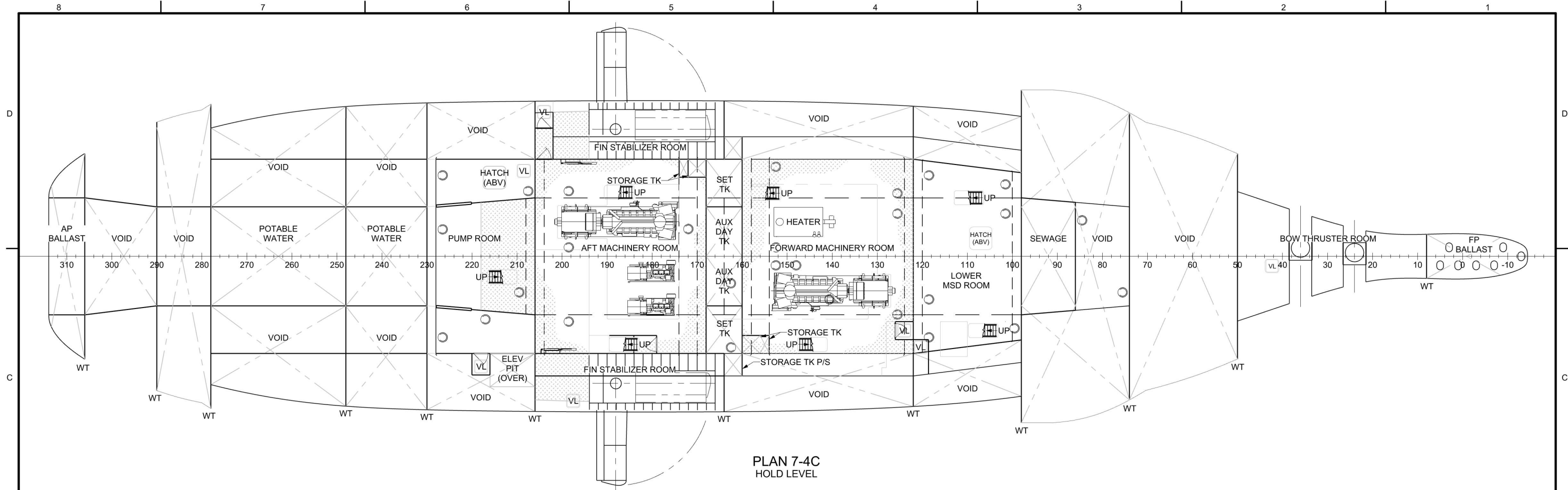


PLAN 6-4C
MAIN DECK

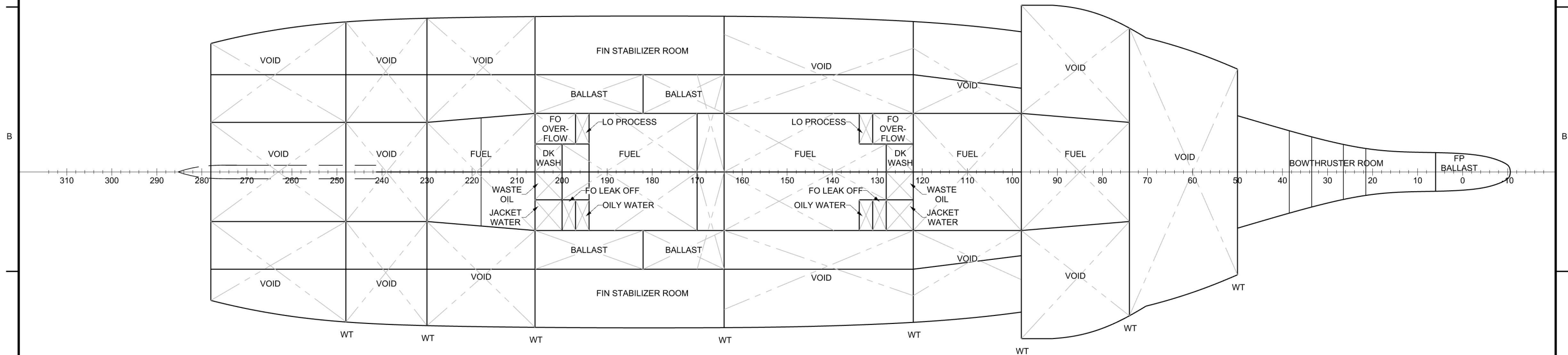


PLAN 6-4A
1ST PLATFORM


PRELIMINARY	ALASKA MARINE HIGHWAY SYSTEM KETCHIKAN, ALASKA			
	TUSTUMENA REPLACEMENT VESSEL (PROJECT 70062) GENERAL ARRANGEMENT MAIN DECK & 1ST PLATFORM			
	 Glostén		More than DESIGN.	
	1201 WESTERN AVENUE, SUITE 200 SEATTLE, WASHINGTON 98101 T +1 206.624.7850 GLOSTEN.COM			
Drawn IHM	Checked IWM	Approved GW	Date 10/12/2021	
Scale 3/64" = 1'-0"		Drawing Number 13105.10-070-001		Sheet 6 of 7 Revision P1



PLAN 7-4C
HOLD LEVEL



PLAN 7-4A
DOUBLE BOTTOM TANK TOP

PRELIMINARY	ALASKA MARINE HIGHWAY SYSTEM KETCHIKAN, ALASKA				
	TUSTUMENA REPLACEMENT VESSEL (PROJECT 70062) GENERAL ARRANGEMENT HOLD LEVEL & DOUBLE BOTTOM TANK TOP				
	 Glostén		More than DESIGN.		
	1201 WESTERN AVENUE, SUITE 200 SEATTLE, WASHINGTON 98101 T +1 206.624.7850 GLOSTEN.COM				
Drawn IHM	Checked IWM	Approved GW	Date 10/12/2021		
Scale 3/64" = 1'-0"		Drawing Number 13105.10-070-001		Sheet 7	Revision P1